

26306 Mini Flash Trigger for Olympus

Instruction Manual

FOREWORD

Thank you for your purchase of a NAUTICAM product.

At NAUTICAM, we pride ourselves in the ability to recognize the requirements of professional as well as amateur underwater photographers and fulfill them through the innovative designs of our products. We strive to achieve a high level of user-friendliness by allowing stress-free installation and easy operation of all important functions of the camera.

Please read this manual carefully before using the product, this will maximize its performance as well as its lifetime.

WARRANTY

All NAUTICAM Products are warranted against any material and manufacturing defects for two years from the date of purchase for consumer use. This warranty only applies to products purchased from authorized NAUTICAM dealers and does not extend beyond the original retail purchaser.

To return your product for service, please contact your regional authorized service center(s). Please note that this warranty only applies when the product is purchased in the territory where the service center is located.

NAUTICAM does not hold responsibility for damage, of any nature, to any equipment used with and/or placed within our products.

NAUTICAM accepts no liability for any loss of captured images or the inability to capture images even if it is due to the malfunctioning of our products.

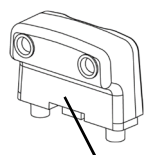
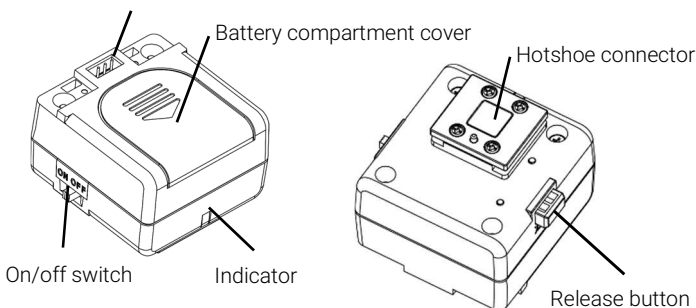
Unauthorized modifications and/or repairs of our products will automatically invalidate the warranty.

PRECAUTIONS

- Use only batteries approved for use in this product, do not mix old and new batteries.
- Check the battery terminals before installing into the product.
- Remove batteries for storage, do not store the product in an environment of high humidity.
- Do not leave the product in direct sunlight for prolonged periods.
- Keep out of reach of children, failure to do so could result in injury.
- Defective products should be shipped to our distributors for service, unauthorized disassembling and/or modifications could result in malfunction.

IDENTIFICATION OF PARTS

LED modules attachment socket



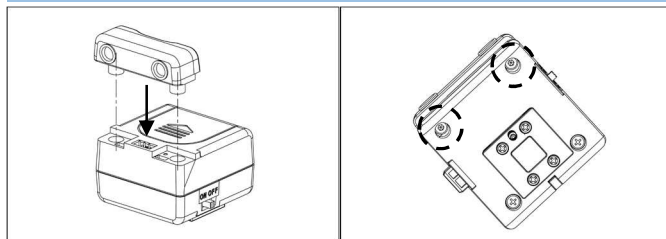
NA398-01-LED module
for NA-EM5II/EM5III/EM1II/EM1III/EM1X/EM10IV

COMPATIBLE HOUSINGS AND MODULES

| Image | PN | Group | Compatible housings | Remark |
|-------|------------------|---------|--|-----------------------------|
| | NA398-01-LED H | Group A | NA-EM5II NA-EM5III NA-EM1II NA-EM1III NA-EM1X NA-EM10IV | included in the package |
| | NA398-01-LED L | - | NA-EM1 | Not included in the package |
| | NA338-01-700-A | - | | |
| | NA398-01-038-0-B | - | NA-EM5II | |

*The flash trigger is shipped without the EM1 and EM5II module from Jul 2021(serial number from A503839 onwards) to reduce unnecessary waste and impact to the environment. Please contact our dealer or innovation@nauticam.com for the EM1 and EM5II LED Module.

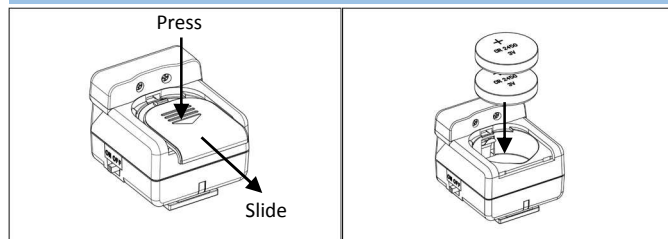
LED MODULE INSTALLATION



Choose the required LED module and attach it to the flash trigger base with the LEDs facing outwards. Make sure the connector on the bottom of the LED module correctly plug-in to the socket on the flash trigger base.

Secure the LED module by tightening the two supplied screws at the bottom of the flash trigger.

BATTERIES INSTALLATION

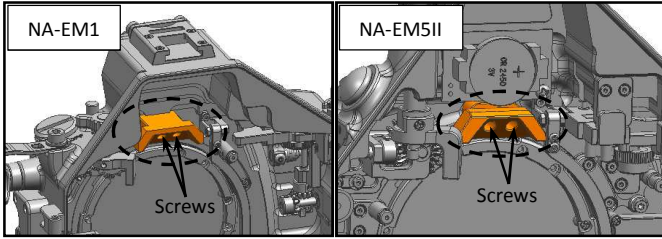


Make sure the On/Off switch is in the OFF position. Remove the battery compartment cover by sliding it outwards.

Install the batteries (Panasonic CR2450 x2pcs) with +ve terminal facing up as shown above. Close the battery compartment cover and then switch the trigger unit on. The indicator will turn green.

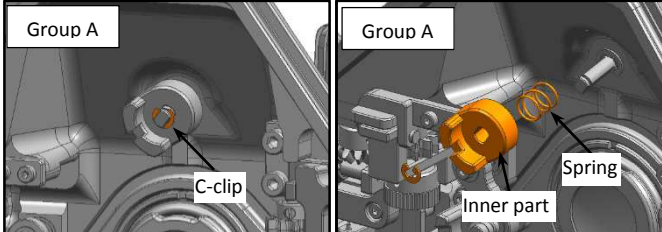
| Indicator | Status of flash trigger |
|------------------------------------|---|
| Green light | Start up. |
| Flashing Green light (1 flash/sec) | Ready to use, normal operation. |
| Flashing Red light (1 flash/sec) | Low battery warning, replace batteries. |

HOUSING PREPARATION



Replace the holder as indicated above with the supplied new holder. Remove the two screws to detach it. Note that NA-EM1III is not required.

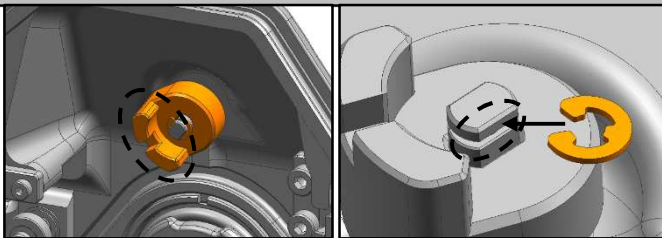
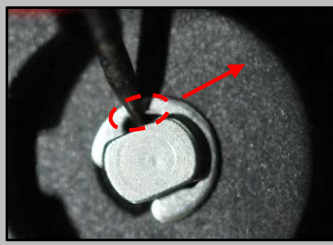
For Group A, remove the inner part of the flash on/off lever.



In the rear housing of Group A, locate the flash on/off inner mechanism (on top of the viewfinder) and then remove the c-clip as indicated above. Detach the flash on/off inner part and spring from the shaft.

Tip: To remove the c-clip, insert a nail or a small flat head screwdriver into the gap as shown below, then pull it out.

Attention: Keep these parts for restoring to use with internal flash.



To restore, align the inner part to the shaft with the extruded part on the left hand side and install the spring and inner part back to the shaft. Then push the c-clip to the groove on the shaft with a pliers or similar to secure.

Attention: Extra c-clips are provided in the package, DO NOT reuse the c-clip.

CONNECT TO THE CAMERA

Align the flash trigger hotshoe connector to the camera hotshoe and slide in until it cannot go in any further. Test the flash trigger by pressing the shutter release button of the camera, the LEDs in the front should turn on instantaneously.

To detach the flash trigger from the camera, press and hold the release button and slide it out.

SPECIFICATIONS

| | |
|----------------------|--|
| Construction: | Body: PC+ABS |
| Dimensions: | Group A: Approx. 37 x 49 x 42mm |
| Weight: | Group A: Approx. 45g (w/ batteries installed) |
| Battery: | Panasonic CR2450 x2pcs |
| Operation: | This is a manual flash trigger only and has no TTL function. |
| Flash Capacity: | Approx. 10000times |
| Compatible housings: | NA-EM1 / EM1II / EM1III NA-EM5II / EM5III NA-EM1X NA-EM10IV |
| Compatible strobes: | INON: Z240 type 4, Z330 D2000 type 4, S2000 Sea&Sea: YS-250, YS-D1/D2/D3, YS-01 |

Remark: Nauticam supports only e-manuals. Please download corresponding product manuals on Nauticam.com website, or contact us for e-manuals.